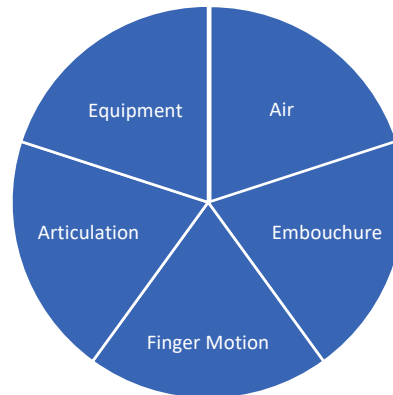


## Start with Success: Instilling Fundamentals with Beginning Clarinet Students, Outline

California All-State Music Education Conference  
Thursday, January 16, 2024, 1:00 PM, B1



### Air

- Efficient use leads to → Characteristic sound, focused tone, stable intonation, musicality
- Entire body is involved with breathing
- Terms & movement: rib cavity, abdominal cavity
- Air use in practice:
  1. Embouchure and air (short notes)- no clarinet
  2. With clarinet and air start (no tongue articulation) for air practice
  3. All slurred with same support as #2
  4. Airy clarinet
  5. Flutter tongue or growl!
  6. "Clarinet-hero"

### Embouchure

- External embouchure (lips, chin, cheeks, surrounding muscles)- seals space around mouthpiece and reed, allows reed to vibrate freely/controlled
- Internal embouchure (tongue, teeth, hard palate, soft palate)- channel and focus air from lungs through mouth cavity, past reed and mouthpiece
- Formation (single lip embouchure): top teeth on top of mouthpiece (use mouthpiece patch), cheeks to teeth, corners in to hug sides of mouthpiece, bottom lip against bottom teeth, lightly bring jaw to meet reed
- Tongue position: "Eeeu" "ü"

### Finger motion

- Hand position and finger motion have effect on tone quality, as well as general hand health of musicians
- In general: neutral, freedom, ease
- Neck straps and thumb rests
- Suggested sequence of learning notes:



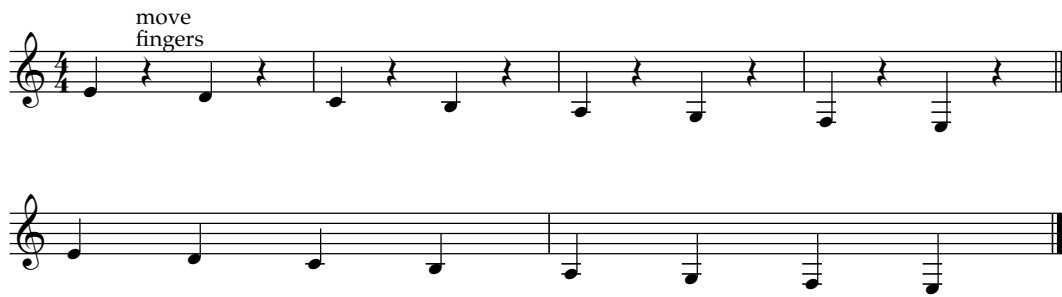
### Articulation

- Interruption of the vibration of the reed, typically with the tongue (artistic choice by air)
- 3 parts to articulation
  1. Release of tone- Tongue starts on the reed and releases from it
  2. Sustain of note
  3. Return to reed to stop vibration
- Tip of tongue to near tip of reed- can be different for each student
- Responsibilities of parts of tongue
- Double tongue & glottal stop
- Syllables



Aileen Razey, DMA (she, her)  
Assistant Professor of Clarinet, St. Olaf College, MN  
[Razey1@stolaf.edu](mailto:Razey1@stolaf.edu)

D'Addario Woodwind Clinician  
Henri Selmer Paris, Conn Selmer Artist  
aileenrazey.com



**Equipment:**

- Choice of and care for equipment effects tone and articulation response
- Mouthpiece Terminology (tip opening, table, facing), choice, and care
- Reed Terminology (tip, cut, blank), choice, and care