

# HARMONIZING THE CHAOS

## STRATEGIES FOR SUCCESS IN LARGE INSTRUMENTAL MUSIC CLASSES



**2025 CALIFORNIA ALL-STATE  
MUSIC EDUCATORS CONFERENCE**

**JOHANNA GAMBOA-KROESEN**  
UCLA HERB ALPERT SCHOOL OF MUSIC

**KATHERINE FINDLAY HAGSTROM**  
IRVINE UNIFIED SCHOOL DISTRICT

# FRAMEWORKS

## UNIVERSAL DESIGN FOR LEARNING (UDL)

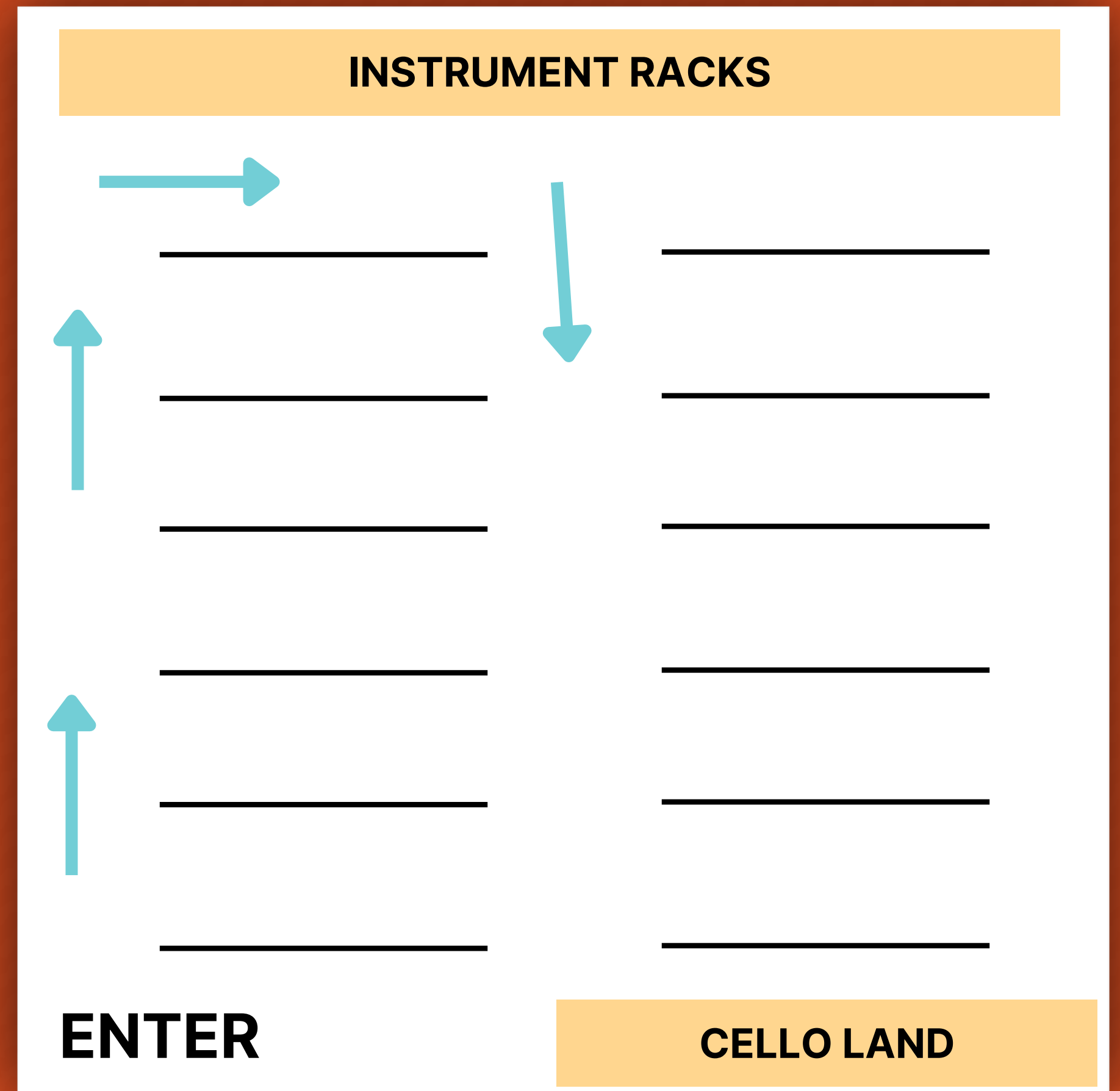
- PROVIDE MULTIPLE MEANS
  - ENGAGEMENT
  - REPRESENTATION
  - ACTION/EXPRESSION
- FLEXIBILITY

## DIVERSITY, EQUITY & INCLUSION

- RECOGNIZE AND CELEBRATE CULTURAL & MUSICAL BACKGROUNDS OF ALL STUDENTS
- EQUITABLE ACCESS TO RESOURCES AND LEARNING OPPORTUNITIES
- FOSTER A SENSE OF BELONGING AND RESPECT

# LOGISTICS

- GRID SYSTEM/WALKING PATHWAYS
- INSTRUMENT STORAGE
- DESIGNATED LARGE INSTRUMENT STORAGE
- COLOR-CODED NAME TAGS



# LOGISTICS *CONTINUED*

- EQUITY
  - ROW ROTATION
  - ACCESS POINTS
- LINING UP OUTSIDE BY SECTION
- PENCIL CHECKS AT THE DOOR
- SELF-HELP CENTERS (SECONDARY)



# LOGISTICS *CONTINUED*



# OWNERSHIP OF SPACE



# STANDPARTNER TEAMS



# ENGAGEMENT



## PACING

- Teach with a sense of (pleasant) urgency
- Quick, not rushed

## FEEDBACK

- Teacher to student
- Student to student
- Use of names

## INCENTIVE SYSTEMS

## PLAY TIME

- Chants/Songs
- Call and Response

## ACCOUNTABILITY

## PROXIMITY



# GAMIFICATION

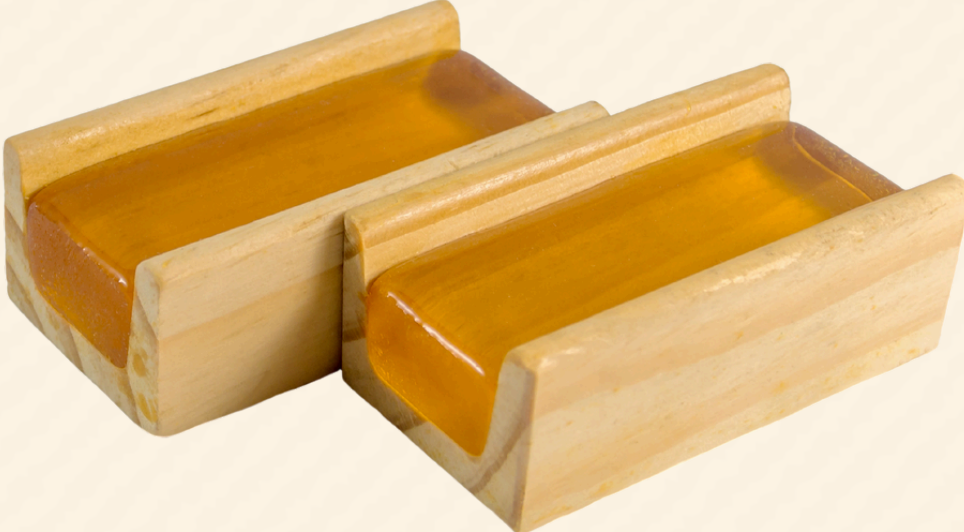
- CONNECTING CONTENT TO FEELING
- CLASSIC GAME STRUCTURES
- HOW CAN ALL STUDENTS BE ENGAGED AT ALL TIMES?
- ARE THERE “WINNERS” OR “LOSERS”?



**RED LIGHT  
GREEN LIGHT**



**HOT & COLD**



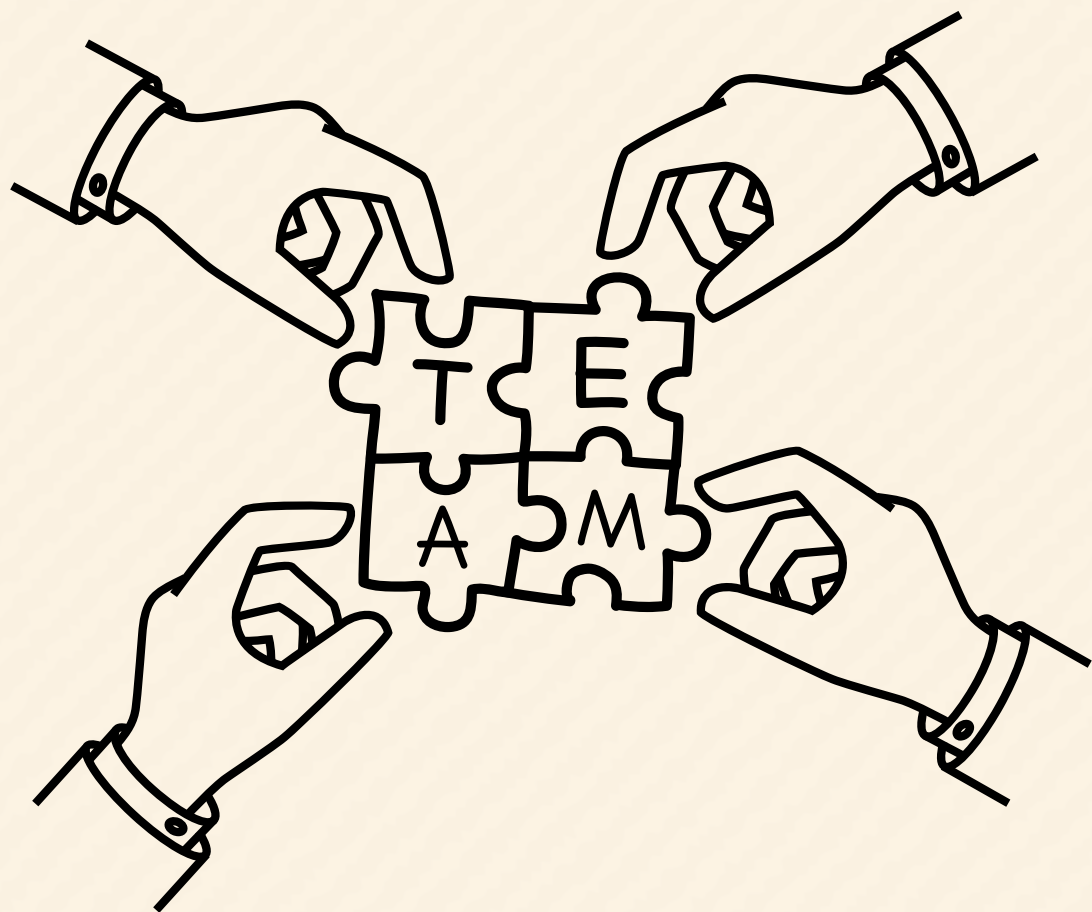
**SPIN IT  
FRIDAYS**



# SENSE OF BELONGING



I am important. I belong here. I matter.



## MY CONTRIBUTION COUNTS

- Provide efficient/effective feedback
- One size does not fit all

## TEAMWORK

- “Team” Philosophy
- Stand partner as a team
- Instrument Team

## TEACHER'S ROLE

- Do you believe it?

# QUESTIONS?

**JOHANNA GAMBOA-KROESEN**

UCLA HERB ALPERT SCHOOL OF MUSIC

JKROESEN@SCHOOLOFMUSIC.UCLA.EDU

**KATHERINE FINDLAY HAGSTROM**

IRVINE UNIFIED SCHOOL DISTRICT

KATHERINEFINDLAY@IUSD.ORG