

Tips For Your Jazz Band Guitarist

Getting the Sound

- Type of guitar and amp
- Cover the sound hole(s) to eliminate feedback
- Where to sit
 - Your body between the guitar and the amp
- String Gauge
 - .011 or .012 first string
- Pick thickness
 - Heavy
- Volume setting
 - Roll off a bit (10%)

Chords

- Barre
- Freddie Green
- Dead String (color tone) (fifthless)
- Simplification
- Chords voicings for styles

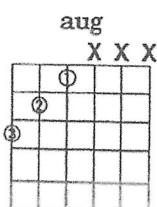
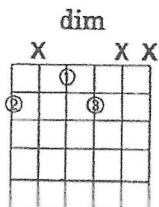
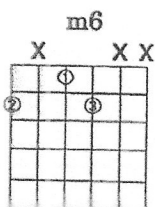
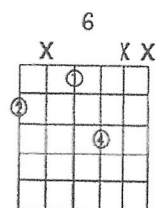
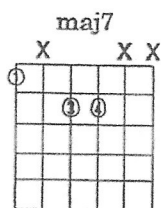
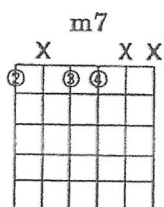
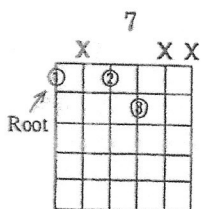
Root locations on the 6th string

0 1 3 5 7 8 10 12 - Fret

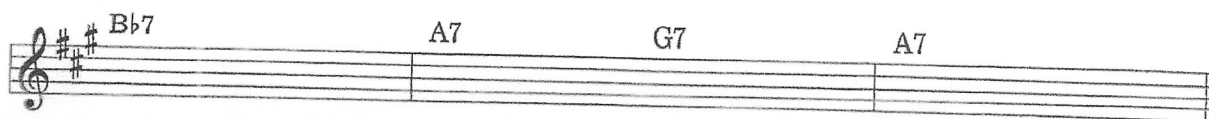
E F G A B C D E - Name

Color-Tone Chords (ala Freddie Green)

First Category (Sixth String Root)



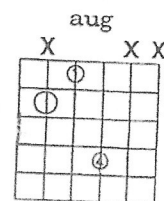
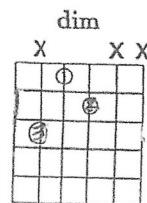
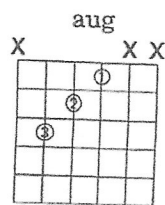
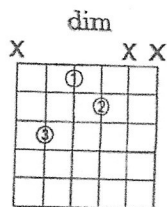
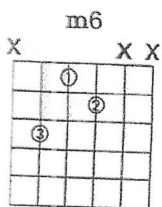
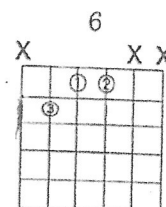
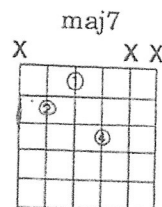
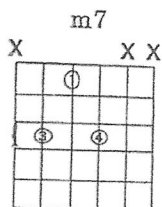
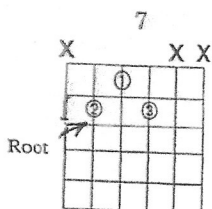
Practice the following progression which uses bass-string chords from the first category.



Root locations on the 5th string

0	2	3	5	7	8	10	12- Fret
A	B	C	D	E	F	G	A - Name

Second Category (Fifth String Root)



Practice the following progression which uses bass-string chords from the second category.

Practice the following progression using color-tone chords from both the sixth-string-root and fifth-string-root categories. When changing chords, use the chord (fifth- or sixth-string-root) that is closest to the chord just played. Keep the fingerings close to one another. You may have to find both versions of a chord to see which one to play next.

A7 D7 A7 Bb7 A7

D7 A7 Bm7 C#m7 Cm7

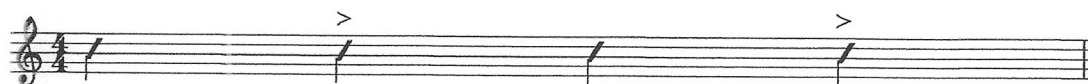
Bm7 E7 C#m7 F#7

Bm7 E7 A7 G7 G#7 A7

Accompaniment Techniques

Four To The Bar

Four to the Bar



Comping

- Accompaniment
- Complement

Comp Patterns

1. 2. 3. 4. 6.

A single staff of music in 4/4 time, containing six numbered patterns. Pattern 1 is a quarter note on G4. Pattern 2 is a quarter note on G4, followed by a quarter rest, then a quarter note on G4. Pattern 3 is a quarter note on G4, followed by a quarter note on A4, then a quarter note on G4. Pattern 4 is a quarter note on G4, followed by a quarter note on A4, then a quarter note on G4. Pattern 5 is a quarter note on G4, followed by a quarter note on A4, then a quarter note on G4. Pattern 6 is a quarter note on G4, followed by a quarter note on A4, then a quarter note on G4.

8 7. 8. 9. 10.

A single staff of music in 4/4 time, containing four numbered patterns. Pattern 7 is a quarter note on G4, followed by a quarter note on A4, then a quarter note on G4. Pattern 8 is a quarter note on G4, followed by a quarter note on A4, then a quarter note on G4. Pattern 9 is a quarter note on G4, followed by a quarter note on A4, then a quarter note on G4. Pattern 10 is a quarter note on G4, followed by a quarter note on A4, then a quarter note on G4.

#1 #2 #3 #4 [Handwritten notation]

Count: 1 2 3 4 | 1 2 3 4 | 1 2 3 4 + | 1 2 3 4 | 1 2 3 4 + | 1 2 3 4

#5 #6 #7

Count: 1 2 3 4 + | 1 2 3 4 | 1 2 3 4 + | 1 2 3 4 | 1 2 3 + 4

#8 #9 #10

Count: 1 + 2 + 3 4 | 1 + 2 + 3 4 | 1 2 3 + 4 + | 1 2 3 4

#11 [Handwritten notation] #12

Count: 1 2 + 3 4 + | 1 2 + 3 4 | 1 + 2 3 4

#13 [Handwritten notation] #14 [Handwritten notation]

Count: 1 + 2 3 4 | 1 2 + 3 4 | 1 + 2 3 4 | 1 2 3 + 4

#15 [Handwritten notation] #16 #17 [Handwritten notation]

Count: 1 + 2 + 3 + 4 + | 1 + (2) + 3 + 4 + | 1 + 2 + 3 + 4 +

#18 [Handwritten notation] #19 [Handwritten notation]

Count: 1 2 + 3 4 | 1 2 + 3 4 + | 1 2 3 4

(A) [Handwritten notation] [Handwritten notation] [Handwritten notation]

Arrive at a Peace Settlement with the Piano Player

- Stay out of each other's way
- Space is cool
- Chord voicings (thin vs. thick)

The Basie/Green formula

- Ed Bickert/Rob McConnell's Boss Brass
- Pat Metheny/Lyle Mays
- Kenny Burrell/Tommy Flanagan (Beyond the Bluebird)
- Herb Ellis/George Shearing
- Wes Montgomery/Live at the Half Note

Single Note Lines

What...there's no tablature?

- Have the student do the conversion.
- Use a conversion chart
By position

Guitar Fundamentals to Learn the Basics

- For a free trial and a packet go to:
<https://cmilearn.org/60-day-classroom-trial/>
- To order books and/or licenses, go to cmilearn.org and click on “purchase courseware”
- Click on “order workbooks”

Stylistic Accompaniments

Latin

Swing

Rock (Power Chords)

Funk (Space)

Single Note Comping

Mel Bay's Complete Jazz Guitar Method

For Guitar Method
And
Guitar Curriculum Go To:
cmilearn.org
Register for a free 60-day trial

For Consensus Guitar Method
And

Guitar Curriculum Go To:

cmilearn.org

Register for a free 60-day trial