



# Empowering ALL in California Music Education

CASMEC • Feb. 22, 2020

**Armalyne De La O**

CMEA President Elect  
Coordinator, Visual & Performing Arts,  
San Bernardino County Superintendent of Schools  
Director, RIMS California Arts Project

**Anne Fennell**

CMEA Vice President  
K-12 Music Program Manager,  
San Diego Unified School District  
Chair, NAFME Innovations Council

*Why*

*We have been gifted an opportunity  
to guide, lead, and expand to be  
all inclusive –  
for all people and all music.*

# Norms

- Facilitate group work without leading outcomes
- Give every voice an opportunity to speak/pass

\*

- Groups of 5-6 in a circle with 1 poster paper
  - each person has 2 sticky notes

# Opportunities in Music Education



- Identify and write down 5 ***opportunities***
  - Star and Share 2 of the Most significant
  - Place your sticky on the poster
  - Identify your group's top 2 opportunities
  - Share with large group

10 minute timer



# Challenges in Music Education



- Identify and write down 5 ***challenges***
  - Star and Share 2 of the Most significant
  - Place your sticky on the poster
  - Identify your group's top 2 opportunities
  - Share with large group

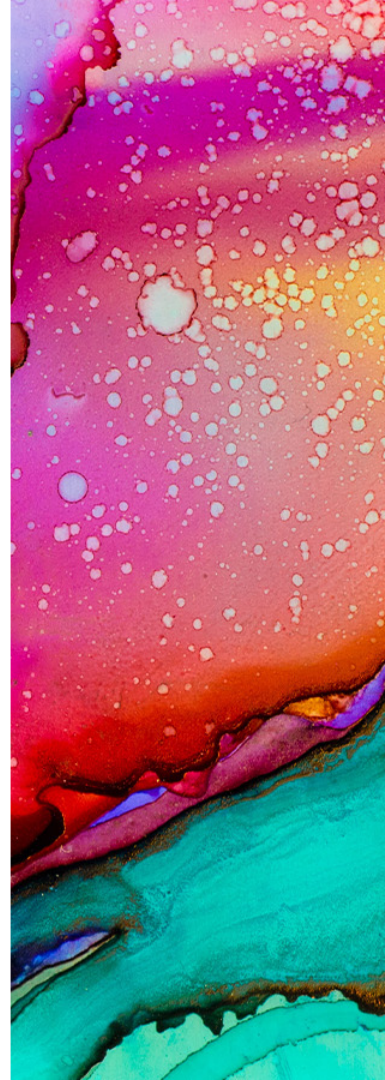
10 minute timer



# Shifting Challenges to Opportunity

- Reword challenge to create something new
- Empower individuals and groups to move
- Leave with more than when we arrived

Brainstorm & Reword



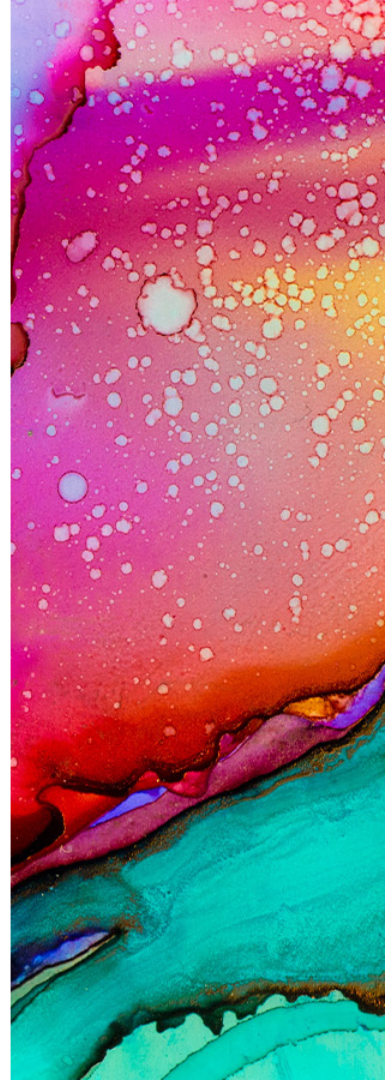




***GOALS***

**List – Choose top 3**

**Unite - Goals for the year**



# Join

- Women of CASMEC Facebook
- Be accountable to 1 person in this room for 1 of the goals
- We will post on Facebook





# Empowered Women in California Music Education

CASMEC • Feb. 22, 2020

**Armalyne De la O**

CMEA President Elect  
Coordinator, Visual & Performing Arts,  
San Bernardino County Superintendent of Schools  
Director, RIMS California Arts Project

**Anne Fennell**

CMEA Vice President  
K-12 Music Program Manager,  
San Diego Unified School District  
Chair, NAFME Innovations Council